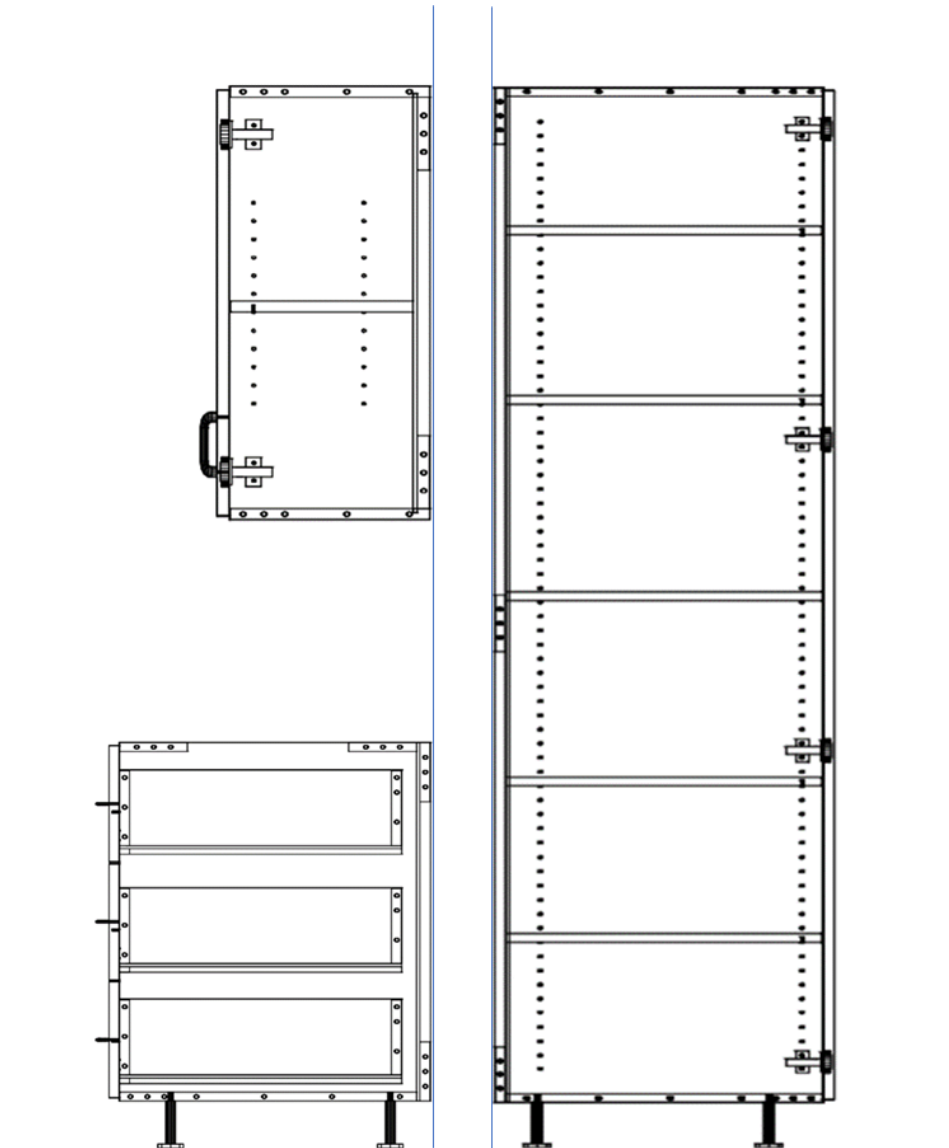




2025 Specification Guide

Division 12300
Manufactured Caseworks
Rev. 12102024R2





typical: not to scale

1. GENERAL:

1.1 SECTION INCLUDES

A. Work required to complete the manufactured casework indicated by the Contract Documents, and the items necessary for its proper installation.

1.2 REFERENCES

A. American Nation Standards Institute (ANSI)

B. American Society for Testing and Materials (ASTM)

1. ASTM D1037, Standard Methods of Evaluating the Properties of Wood-Base Fiber and Particle Panel Materials.

C. Architectural Woodwork Institute (AWI)

1. AWI, Architectural Woodwork Quality Standards, Eight Edition, Version 1.0.
a) Section 1600, Architectural Cabinets.

1.3 SUBMITTALS

A. Comply with Section 01330.

B. Shop Drawings: Indicate dimensions, descriptions of materials and finishes, general construction, specific modifications, component connections, anchorage methods, hardware, and installation procedures, including specific requirements where indicated.

1. Show work in related and dimensional position with section shown.
2. Indicate material and wood species, component profiles, fastening, jointing, details, finishes and accessories.
3. Indicate locations of plumbing and electrical service field conditions.

C. Samples: Submit samples of factory finish. Submit sample of finish on TFL laminate for color and finish selection.

1. Component Samples: Two sets of samples in 8-inch by 10-inch size, unless otherwise indicated, for each of the following items:
 - a) TFL for color and texture/finish selection.
 - b) Grommets for color.
 - c) Thermoset decorative overlays.
 - d) Hardware sample for appearance.
 - e) Work surface for appearance review.

1.4 QUALITY ASSURANCE

A. Quality Standards: Comply with 2007 Quality Standards of Architectural Woodwork Industry.

B. Fabricator's Qualifications: more than 30 years' experience in the actual production of specified products.

C. Field Measurements: Where woodwork is indicated to fit to other construction, verify dimensions of other construction by field measurement before fabrication and indicate measurements on shop drawing. Coordinate fabrication schedule with construction progress to avoid delaying the work.

1. Locate concealed framing, blocking, and reinforcements that support woodwork by field measurement before being enclosed and indicate measurements on shop drawings.

1.5 DELIVERY, STORAGE, AND HANDLING

- A. Deliver, store, and handle products in exact accordance with the manufacturer published instructions and requirements. Store materials out of the weather.
- B. Deliver materials in the original unopened packages with manufacturer's name, labels, product identification and lot numbers where appropriate.

1.6 WARRANTY

- A. Manufacturer shall provide a 3-year materials and workmanship warranty for the replacement of any defective part. Functional hardware (hinges and drawer glides) are warranted for the life of the product.

2. PRODUCTS:

2.1 MANUFACTURERS

- A. Competence: Woodwork shall be manufactured by well-established and experienced firm acceptable to Owner and Architect, with satisfactory record of similar size and quality installations.

1. Manufactured casework shall be "Vogel" as manufactured by Vogel Multifamily Casework

2.2 MATERIALS

A. Particleboard

1. Particleboard shall be 45 to 48 per cubic foot density, industrial grade ANSI M-2, conforming to ASTM D1037. Product shall meet requirements of ANSI A208.1-2009.
 - a) 1-inch thick particleboard as used for countertop core.
 - b) 1-inch thick particleboard as used for shelves, wall cabinet tops and bottoms.
 - c) 3/4-inch thick particleboard as used for cabinet sides, cabinets, bottoms, screw attachment strips and door/drawer fronts.
 - d) 5/8-inch thick particleboard as used for drawer bodies.
 - e) 3/4-inch thick particleboard as used for internal dividers.
 - f) 1/4-inch thick particleboard as used for cabinet backs and drawer bottoms.

- B. Medium Density Fiberboard (MDF) shall be 48-pound per cubic foot density, industrial grade ANSI M-2, conforming to ASTM D1037. Manufactured from 100% post-industrial recycled wood residuals. Product shall meet requirements of ANSI A208.2-2009. Compliant with CARB ATCM 93120 Phase 1 Certified. FSC Certified

- C. Optional, high-pressure laminate (HPL) for exposed cabinetry surfaces shall be Vertical Grade GP-28, with 0.030-inch nominal thickness as defined by NEMA - LD3-1995 vertical surfacing grade. Product shall be adhered to substrate with thermosetting water based multi-bond adhesive, under 200-psi at no more than 200-degree Fahrenheit. Colors shall be as indicated on the drawings.

- D. (HPL) for countertop surfaces shall be Horizontal Grade GP-50, with 0.050-inch nominal thickness as defined by NEMA - LD3-1995 horizontal surfacing grade. Product shall be adhered to substrate with thermosetting water based multi-bond adhesive, under 200-psi at no more than 200-degree Fahrenheit. Colors shall be as indicated on the drawings.

E. Edging shall be rigid polyvinyl chloride (PVC), 0.5-millimeter on carcass parts; 1.0 millimeter on fronts and finished panels. Edging shall be attached with a hotmelt thermoplastic adhesive.

F. Thermo-fused melamine laminate shall be thermally fused to substrate under 400-psi at 380-degree Fahrenheit. Product shall have been tested in accordance with NEMA -LD3-1995.

G. Solid Wood: Kiln dried, 5/8" thick solid wood, dovetailed drawer boxes with clear finish are available.

2.3 CABINET HARDWARE AND ACCESSORIES

A. Hinges for full-overlay doors, shall be nickel-plated metal, soft-close, concealed 110-degree swing, six-way adjustable clip-on type. Two hinges per door up to 36 inches, minimum of three hinges per door on tall cabinets. Dampening switch to decelerate close.

B. Drawer slides shall be concealed, under-mount, soft-close, 6-way adjustable, zinc-plated steel with Delrin roller ball bearings, under-mount, full extension on all drawers. 100# static load rating; 75# dynamic.

C. Shelf support pins are 5-millimeter diameter, nickel-plated metal. Shelves are adjustable in all cabinets.

2.4 INSTALLATION MATERIALS

A. Fasteners

1. Screws shall be of selected material, type, size, and finish as required for use, conforming to FS FF-S-11a.
2. Nails shall be of selected material, type, size, and finish as required for use, conforming to FS FF-N-105.
3. Male and female threaded connectors shall be used for runs of cabinets.

B. Anchors shall be selected material, type, size, and finish as required for each substrate for secure anchorage.

C. Expansion shields, expansion nails and anchoring drive screws shall conform to FSFF-S-325.

D. Adhesive shall be manufactured by Franklin Construction Adhesives and Glue; or approved equal.

2.5 CASEWORK FABRICATION

A. Base cabinets are constructed of ¾ inch thick, white themofused laminate (TFL) sides, tops, and bottoms. Wall cabinets are constructed of ¾ inch thick sides, top and bottom. Tops and bottoms are glued and doweled to cabinet sides and fixed internal dividers. Edgebanding on all cabinet parts is white, 1mm thick PVC.

B. Door and drawer cabinet fronts are ¾ inch thick themofused laminate (TFL). Doors and drawer fronts are edgebanded with 1mm thick PVC edgebanding on four edges. 3mm reveals.

C. Optional door and drawer fronts available in painted solid wood.

D. Finished end panels are ¾ inch thick themofused laminate (TFL) match cabinet or front color, whichever is specified.

E. All exterior and interior surfaces are finished in themofused laminate (TFL) and all internal parts are finished to match cabinet color.

F. Cabinet shelves are ¾ inch themofused laminate (TFL) with front edge banded.

G. Cabinet backs ¼ inch thick laminated with themofused laminate (TFL) to match cabinet finish trapped in a ¼ inch wide groove and glued in place. Screw strips are ¾ inch thick, glued and doweled to side panels.

H. Drawer boxes are 5/8-inch thick, white themofused laminate (TFL), and finished with .5mm edgebanding on top edge to match. Optional 5/8" thick, dovetailed solid wood drawer boxes with clear finish are available.

I. Cabinets are edged on front edges.

J. Base Cabinets are mounted on four legs with 1" of height adjustment.

K. Cabinet fronts and finish panels are available in Optional vertical grade GP28 laminate on both sides.

2.6 COUNTERTOP FABRICATION

A. Countertops shall be ¾" inch total thickness made from 13/16" inch particleboard with .050-inch high-pressure laminate covering. Countertops shall be machine-edged in colored 1.0-millimeter PVC banding eased at corners.

B. Backsplashes shall be 3/4-inch particleboard, with high-pressure laminate covering. Tops shall be machine-edged in colored 1.0-millimeter PVC banding eased at corners.

C. Secure backsplashes to countertops with concealed fastening methods. Seal all joints by setting backsplash into a continuous bead of silicone sealant prior to attachment.

3. EXECUTION:

3.1 EXAMINATION

A. Examine all adjoining work, verify all governing dimensions, and report any unsatisfactory conditions.

3.2 INSTALLATION

A. Install materials and systems in accordance with manufacturer published instructions and requirements. Install materials with uniform appearance and in proper relation with adjacent construction.

B. Accurately set all cabinets plumb, square level, and permanently secure in position as indicated on the drawings. Install casework to a tolerance of 1/8-inch in 96-inches for plumb and level.

C. Install casework without distortion so that doors and drawers fit openings properly and are accurately aligned. Adjust hardware to center doors and drawers in all openings and to provide smooth unrestricted operation.

D. Exercise extreme care to avoid damaging casework finish during the handling and erecting of all members.

E. Field fabrications and modifications of casework required for completion of units shall be performed with extreme care to avoid damage to casework finish. Scribe casework and fillers as required for a tight fit.

F. Wall cabinets shall be securely fastened to studs or blocking in the wall.

H. Install countertops on base cabinets and other support systems with screws. Secure backsplashes to tops with concealed fastening methods.

I. Install solid surfacing material countertops on base cabinets and other support systems with approved silicone sealant/adhesive. Secure backsplashes to tops with approved silicone sealant/adhesive.

3.3 CLEANING

A. Clean all materials provided under this section and all adjacent materials, which may have become soiled from this work.

B. Wipe out casework interiors and empty drawers of dirt and debris. Remove pencil marks and other blemishes from casework surfaces.

C. Remove foreign matter that could affect operation or appearance of hardware.

D. Make final adjustments to drawers and doors. Doors shall swing freely. All doors shall be aligned both vertically and horizontally. Drawers shall open and close smoothly without binding or excessive slide and play.

E. Remove from the site, all debris resulting from the work of this section.

F. Cleaning and Maintenance of Casework:

In order to maintain the life and appearance of TFL (thermally fused laminate) assemblies and panels, please follow these guidelines:

- After installing the product, remove adhesives with a citrus-based cleaner. If solvent-based cleaner is used, ensure the area is well-ventilated area. (Continued use of solvent based cleaners is not recommended)
- TFL finished panels may be easily cleaned using mild non-abrasive, all-purpose cleaner and a soft cloth. Coffee, tea, or other difficult stains may be removed using a mild household detergent or a paste of baking soda and water (note: 10 – 20 strokes should remove most stains. Excessive force or scrubbing may damage the surface).
- Harsh chemicals or abrasive materials should not be used. Should the surface come in contact with drain, toilet, or oven cleaner, rinse thoroughly and wipe dry. Abrasives such as scouring pads or gritty cleansers may permanently dull and/or scratch the surface and result in future staining.
- Protect the surface from hot or sharp objects. Do not place hot cookware, dishes, or objects on to the surface. Knives and other sharp objects used directly on the surface can also be damaging. Protect surfaces from heat with an insulating pad or trivet, and sharp objects with a chopping block or counter protector.

4. CABINET MATRIX:

Wall Cabinets												
12" d												
H	width											
	9	12	15	18	21	24	27	30	32	33	36	
12												
15												
18												
21												
24												
27												
30												
33												
36												
39												
42												

Tall & Open Cabinets											
94.5" h											
depth	width										
	12	15	18	21	24	27	30	33	36		
	12"										
	15"										
	18"										
	21"										
	24"										

Base Cabinets												
34.5" h X 24" d												
	width											
	9	12	15	18	21	24	27	30	33	36	39	
door only												
drawer over door												
2 drawer												
3 drawer												
4 drawer												
blind corner												
sink base w/ff												

Vanity Base Cabinets:												
28.5" h X 21" d												
	width											
	9	12	15	18	21	24	27	30	33	36	39	
door only												
drawer over door												
2 drawer												
3 drawer												
4 drawer												
blind corner												
sink base w/ff												

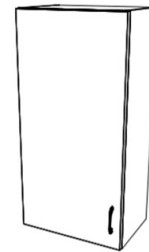
5. FINISHES:

Available upon Request

6. CATALOG:

all dimensions in inches

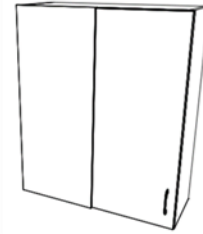
Wall Single Door							
Ref.	Cabinet Name	Description	Width	x	Height	x	Depth
1	W093012L	Wall Cabinet 1-Door and 1-Shelf	9	x	30	x	11.125
2	W123012L	Wall Cabinet 1-Door and 1-Shelf	12	x	30	x	11.125
3	W153012L	Wall Cabinet 1-Door and 1-Shelf	15	x	30	x	11.125
4	W183012L	Wall Cabinet 1-Door and 1-Shelf	18	x	30	x	11.125
5	W213012L	Wall Cabinet 1-Door and 1-Shelf	21	x	30	x	11.125
6	W243012L	Wall Cabinet 1-Door and 1-Shelf	24	x	30	x	11.125
7	W093012R	Wall Cabinet 1-Door and 1-Shelf	9	x	30	x	11.125
8	W123012R	Wall Cabinet 1-Door and 1-Shelf	12	x	30	x	11.125
9	W153012R	Wall Cabinet 1-Door and 1-Shelf	15	x	30	x	11.125
10	W183012R	Wall Cabinet 1-Door and 1-Shelf	18	x	30	x	11.125
11	W213012R	Wall Cabinet 1-Door and 1-Shelf	21	x	30	x	11.125
12	W243012R	Wall Cabinet 1-Door and 1-Shelf	24	x	30	x	11.125
13	W093612L	Wall Cabinet 1-Door and 2-Shelves	9	x	36	x	11.125
14	W123612L	Wall Cabinet 1-Door and 2-Shelves	12	x	36	x	11.125
15	W153612L	Wall Cabinet 1-Door and 2-Shelves	15	x	36	x	11.125
16	W183612L	Wall Cabinet 1-Door and 2-Shelves	18	x	36	x	11.125
17	W213612L	Wall Cabinet 1-Door and 2-Shelves	21	x	36	x	11.125
18	W243612L	Wall Cabinet 1-Door and 2-Shelves	24	x	36	x	11.125
19	W093612R	Wall Cabinet 1-Door and 2-Shelves	9	x	36	x	11.125
20	W123612R	Wall Cabinet 1-Door and 2-Shelves	12	x	36	x	11.125
21	W153612R	Wall Cabinet 1-Door and 2-Shelves	15	x	36	x	11.125
22	W183612R	Wall Cabinet 1-Door and 2-Shelves	18	x	36	x	11.125
23	W213612R	Wall Cabinet 1-Door and 2-Shelves	21	x	36	x	11.125
24	W243612R	Wall Cabinet 1-Door and 2-Shelves	24	x	36	x	11.125
25	W094212L	Wall Cabinet 1-Door and 2-Shelves	9	x	42	x	11.125
26	W124212L	Wall Cabinet 1-Door and 2-Shelves	12	x	42	x	11.125
27	W154212L	Wall Cabinet 1-Door and 2-Shelves	15	x	42	x	11.125
28	W184212L	Wall Cabinet 1-Door and 2-Shelves	18	x	42	x	11.125
29	W214212L	Wall Cabinet 1-Door and 2-Shelves	21	x	42	x	11.125
30	W244212L	Wall Cabinet 1-Door and 2-Shelves	24	x	42	x	11.125
31	W094212R	Wall Cabinet 1-Door and 2-Shelves	9	x	42	x	11.125
32	W124212R	Wall Cabinet 1-Door and 2-Shelves	12	x	42	x	11.125
33	W154212R	Wall Cabinet 1-Door and 2-Shelves	15	x	42	x	11.125
34	W184212R	Wall Cabinet 1-Door and 2-Shelves	18	x	42	x	11.125
35	W214212R	Wall Cabinet 1-Door and 2-Shelves	21	x	42	x	11.125
36	W244212R	Wall Cabinet 1-Door and 2-Shelves	24	x	42	x	11.125



Wall Double Door							
	Cabinet Name	Description	Width	x	Height	x	Depth
37	W301212	Wall Cabinet 2-Doors (no shelf)	30	x	12	x	11.125
38	W301512	Wall Cabinet 2-Doors (no shelf)	30	x	15	x	11.125
39	W331512	Wall Cabinet 2-Doors (no shelf)	33	x	15	x	11.125
40	W301812	Wall Cabinet 2-Doors and 1-Shelf	30	x	18	x	11.125
41	W302112	Wall Cabinet 2-Doors and 1-Shelf	30	x	21	x	11.125
42	W242412	Wall Cabinet 2-Doors and 1-Shelf	24	x	24	x	11.125
43	W302412	Wall Cabinet 2-Doors and 1-Shelf	30	x	24	x	11.125
44	W362412	Wall Cabinet 2-Doors and 1-Shelf	36	x	24	x	11.125
45	W243012	Wall Cabinet 2-Doors and 1-Shelf	24	x	30	x	11.125
46	W273012	Wall Cabinet 2-Doors and 1-Shelf	27	x	30	x	11.125
47	W303012	Wall Cabinet 2-Doors and 1-Shelf	30	x	30	x	11.125
48	W333012	Wall Cabinet 2-Doors and 1-Shelf	33	x	30	x	11.125
49	W363012	Wall Cabinet 2-Doors and 1-Shelf	36	x	30	x	11.125
50	W243612	Wall Cabinet 2-Doors and 2-Shelves	24	x	36	x	11.125
51	W273612	Wall Cabinet 2-Doors and 2-Shelves	27	x	36	x	11.125
52	W303612	Wall Cabinet 2-Doors and 2-Shelves	30	x	36	x	11.125
53	W333612	Wall Cabinet 2-Doors and 2-Shelves	33	x	36	x	11.125
54	W363612	Wall Cabinet 2-Doors and 2-Shelves	36	x	36	x	11.125
55	W244212	Wall Cabinet 2-Doors and 2-Shelves	24	x	42	x	11.125
56	W274212	Wall Cabinet 2-Doors and 2-Shelves	27	x	42	x	11.125
57	W304212	Wall Cabinet 2-Doors and 2-Shelves	30	x	42	x	11.125
58	W334212	Wall Cabinet 2-Doors and 2-Shelves	33	x	42	x	11.125
59	W364212	Wall Cabinet 2-Doors and 2-Shelves	36	x	42	x	11.125
60	W302425	Wall Cabinet 2-Doors (Refrigerator)	30	x	24	x	24.125



Wall Blind Corner							
	Cabinet Name	Description	Width	x	Height	x	Depth
61	WBC273012L	Wall Blind Corner 1-Door/1-fixed Door and 1-Shelf	27	x	30	x	11.125
62	WBC303012L	Wall Blind Corner 1-Door/1-fixed Door and 1-Shelf	30	x	30	x	11.125
63	WBC333012L	Wall Blind Corner 1-Door/1-fixed Door and 1-Shelf	33	x	30	x	11.125
64	WBC363012L	Wall Blind Corner 1-Door/1-fixed Door and 1-Shelf	36	x	30	x	11.125
65	WBC273012R	Wall Blind Corner 1-Door/1-fixed Door and 1-Shelf	27	x	30	x	11.125
66	WBC303012R	Wall Blind Corner 1-Door/1-fixed Door and 1-Shelf	30	x	30	x	11.125
67	WBC333012R	Wall Blind Corner 1-Door/1-fixed Door and 1-Shelf	33	x	30	x	11.125
68	WBC363012R	Wall Blind Corner 1-Door/1-fixed Door and 1-Shelf	36	x	30	x	11.125
69	WBC273612L	Wall Blind Corner 1-Door/1-fixed Door and 2-Shelves	27	x	36	x	11.125
70	WBC303612L	Wall Blind Corner 1-Door/1-fixed Door and 2-Shelves	30	x	36	x	11.125
71	WBC333612L	Wall Blind Corner 1-Door/1-fixed Door and 2-Shelves	33	x	36	x	11.125
72	WBC363612L	Wall Blind Corner 1-Door/1-fixed Door and 2-Shelves	36	x	36	x	11.125
73	WBC273612R	Wall Blind Corner 1-Door/1-fixed Door and 2-Shelves	27	x	36	x	11.125
74	WBC303612R	Wall Blind Corner 1-Door/1-fixed Door and 2-Shelves	30	x	36	x	11.125
75	WBC333612R	Wall Blind Corner 1-Door/1-fixed Door and 2-Shelves	33	x	36	x	11.125
76	WBC363612R	Wall Blind Corner 1-Door/1-fixed Door and 2-Shelves	36	x	36	x	11.125
77	WBC274212L	Wall Blind Corner 1-Door/1-fixed Door and 2-Shelves	27	x	42	x	11.125
78	WBC304212L	Wall Blind Corner 1-Door/1-fixed Door and 2-Shelves	30	x	42	x	11.125
79	WBC334212L	Wall Blind Corner 1-Door/1-fixed Door and 2-Shelves	33	x	42	x	11.125
80	WBC364212L	Wall Blind Corner 1-Door/1-fixed Door and 2-Shelves	36	x	42	x	11.125
81	WBC274212R	Wall Blind Corner 1-Door/1-fixed Door and 2-Shelves	27	x	42	x	11.125
82	WBC304212R	Wall Blind Corner 1-Door/1-fixed Door and 2-Shelves	30	x	42	x	11.125
83	WBC334212R	Wall Blind Corner 1-Door/1-fixed Door and 2-Shelves	33	x	42	x	11.125
84	WBC364212R	Wall Blind Corner 1-Door/1-fixed Door and 2-Shelves	36	x	42	x	11.125



Base Open - ADA							
Ref.	Cabinet Name	Description	Width	x	Height	x	Depth
85	CAB123424	Open Cabinet 1-Shelf	12	x	32.5	x	23.125
86	CAB163424	Open Cabinet 1-Shelf	15	x	32.5	x	23.125
87	CAB183424	Open Cabinet 1-Shelf	18	x	32.5	x	23.125
88	CAB203424	Open Cabinet 1-Shelf	21	x	32.5	x	23.125
89	CAB243424	Open Cabinet 1-Shelf	24	x	32.5	x	23.125
90	CAB303424	Open Cabinet 1-Shelf	30	x	32.5	x	23.125
91	CAB323424	Open Cabinet 1-Shelf	33	x	32.5	x	23.125
92	CAB363424	Open Cabinet 1-Shelf	36	x	32.5	x	23.125
93	CAB393424	Open Cabinet 1-Shelf	39	x	32.5	x	23.125
Base Open							
	Cabinet Name	Description	Width	x	Height	x	Depth
94	CAB123624	Open Cabinet 1-Shelf	12	x	34.5	x	23.125
95	CAB163624	Open Cabinet 1-Shelf	15	x	34.5	x	23.125
96	CAB183624	Open Cabinet 1-Shelf	18	x	34.5	x	23.125
97	CAB203624	Open Cabinet 1-Shelf	21	x	34.5	x	23.125
98	CAB243624	Open Cabinet 1-Shelf	24	x	34.5	x	23.125
99	CAB303624	Open Cabinet 1-Shelf	30	x	34.5	x	23.125
100	CAB323624	Open Cabinet 1-Shelf	32	x	34.5	x	23.125
101	CAB363624	Open Cabinet 1-Shelf	36	x	34.5	x	23.125
102	CAB393624	Open Cabinet 1-Shelf	39	x	34.5	x	23.125



Base Single Door - ADA							
Ref.	Cabinet Name	Description	Width	x	Height	x	Depth
103	S8093424L	Storage Base Cabinet 1-Door and 1-Shelf	9	x	32.5	x	23.125
104	S8123424L	Storage Base Cabinet 1-Door and 1-Shelf	12	x	32.5	x	23.125
105	S8153424L	Storage Base Cabinet 1-Door and 1-Shelf	15	x	32.5	x	23.125
106	S8183424L	Storage Base Cabinet 1-Door and 1-Shelf	18	x	32.5	x	23.125
107	S8213424L	Storage Base Cabinet 1-Door and 1-Shelf	21	x	32.5	x	23.125
108	S8243424L	Storage Base Cabinet 1-Door and 1-Shelf	24	x	32.5	x	23.125
109	S8093424R	Storage Base Cabinet 1-Door and 1-Shelf	9	x	32.5	x	23.125
110	S8123424R	Storage Base Cabinet 1-Door and 1-Shelf	12	x	32.5	x	23.125
111	S8153424R	Storage Base Cabinet 1-Door and 1-Shelf	15	x	32.5	x	23.125
112	S8183424R	Storage Base Cabinet 1-Door and 1-Shelf	18	x	32.5	x	23.125
113	S8213424R	Storage Base Cabinet 1-Door and 1-Shelf	21	x	32.5	x	23.125
114	S8243424R	Storage Base Cabinet 1-Door and 1-Shelf	24	x	32.5	x	23.125



Base Single Door							
Ref.	Cabinet Name	Description	Width	x	Height	x	Depth
115	S8093624L	Storage Base Cabinet 1-Door and 1-Shelf	9	x	34.5	x	23.125
116	S8123624L	Storage Base Cabinet 1-Door and 1-Shelf	12	x	34.5	x	23.125
117	S8153624L	Storage Base Cabinet 1-Door and 1-Shelf	15	x	34.5	x	23.125
118	S8183624L	Storage Base Cabinet 1-Door and 1-Shelf	18	x	34.5	x	23.125
119	S8213624L	Storage Base Cabinet 1-Door and 1-Shelf	21	x	34.5	x	23.125
120	S8243624L	Storage Base Cabinet 1-Door and 1-Shelf	24	x	34.5	x	23.125
121	S8093624R	Storage Base Cabinet 1-Door and 1-Shelf	9	x	34.5	x	23.125
122	S8123624R	Storage Base Cabinet 1-Door and 1-Shelf	12	x	34.5	x	23.125
123	S8153624R	Storage Base Cabinet 1-Door and 1-Shelf	15	x	34.5	x	23.125
124	S8183624R	Storage Base Cabinet 1-Door and 1-Shelf	18	x	34.5	x	23.125
125	S8213624R	Storage Base Cabinet 1-Door and 1-Shelf	21	x	34.5	x	23.125
126	S8243624R	Storage Base Cabinet 1-Door and 1-Shelf	24	x	34.5	x	23.125



Base Wall Hung Double Door (Vanity)							
Ref.	Cabinet Name	Description	Width	x	Height	x	Depth
127	WSB242021	Wall Storage Base Cabinet 2-Doors and 1-Shelf	24	x	20	x	20.125
128	WSB272021	Wall Storage Base Cabinet 2-Doors and 1-Shelf	27	x	20	x	20.125
129	WSB302021	Wall Storage Base Cabinet 2-Doors and 1-Shelf	30	x	20	x	20.125
130	WSB332021	Wall Storage Base Cabinet 2-Doors and 1-Shelf	33	x	20	x	20.125
131	WSB362021	Wall Storage Base Cabinet 2-Doors and 1-Shelf	36	x	20	x	20.125



Base Double Door - ADA							
Ref.	Cabinet Name	Description	Width	x	Height	x	Depth
132	S8243424	Storage Base Cabinet 2-Doors and 1-Shelf	24	x	32.5	x	23.125
133	S8273424	Storage Base Cabinet 2-Doors and 1-Shelf	27	x	32.5	x	23.125
134	S8303424	Storage Base Cabinet 2-Doors and 1-Shelf	30	x	32.5	x	23.125
135	S8333424	Storage Base Cabinet 2-Doors and 1-Shelf	33	x	32.5	x	23.125
136	S8363424	Storage Base Cabinet 2-Doors and 1-Shelf	36	x	32.5	x	23.125
137	S8393424	Storage Base Cabinet 2-Doors and 1-Shelf	39	x	32.5	x	23.125



Base Double Door							
Ref.	Cabinet Name	Description	Width	x	Height	x	Depth
138	S8243624	Storage Base Cabinet 2-Doors and 1-Shelf	24	x	34.5	x	23.125
139	S8273624	Storage Base Cabinet 2-Doors and 1-Shelf	27	x	34.5	x	23.125
140	S8303624	Storage Base Cabinet 2-Doors and 1-Shelf	30	x	34.5	x	23.125
141	S8333624	Storage Base Cabinet 2-Doors and 1-Shelf	33	x	34.5	x	23.125
142	S8363624	Storage Base Cabinet 2-Doors and 1-Shelf	36	x	34.5	x	23.125
143	S8393624	Storage Base Cabinet 2-Doors and 1-Shelf	39	x	34.5	x	23.125



Base Blind Corner - ADA							
Ref.	Cabinet Name	Description	Width	x	Height	x	Depth
144	BBC243424L	Base Blind Corner Cabinet 1-Door/1-fixed Door and 1-Shelf	24	x	32.5	x	23.125
145	BBC303424L	Base Blind Corner Cabinet 1-Door/1-fixed Door and 1-Shelf	30	x	32.5	x	23.126
146	BBC323424L	Base Blind Corner Cabinet 1-Door/1-fixed Door and 1-Shelf	32	x	32.5	x	23.126
147	BBC363424L	Base Blind Corner Cabinet 1-Door/1-fixed Door and 1-Shelf	36	x	32.5	x	23.126
148	BBC243424R	Base Blind Corner Cabinet 1-Door/1-fixed Door and 1-Shelf	24	x	32.5	x	23.125
149	BBC303424R	Base Blind Corner Cabinet 1-Door/1-fixed Door and 1-Shelf	30	x	32.5	x	23.126
150	BBC323424R	Base Blind Corner Cabinet 1-Door/1-fixed Door and 1-Shelf	32	x	32.5	x	23.126
151	BBC363424R	Base Blind Corner Cabinet 1-Door/1-fixed Door and 1-Shelf	36	x	32.5	x	23.126



Base Blind Corner							
Ref.	Cabinet Name	Description	Width	x	Height	x	Depth
152	BBC243624L	Base Blind Corner Cabinet 1-Door/1-fixed Door and 1-Shelf	24	x	34.5	x	23.125
153	BBC303624L	Base Blind Corner Cabinet 1-Door/1-fixed Door and 1-Shelf	30	x	34.5	x	23.126
154	BBC323624L	Base Blind Corner Cabinet 1-Door/1-fixed Door and 1-Shelf	32	x	34.5	x	23.126
155	BBC363624L	Base Blind Corner Cabinet 1-Door/1-fixed Door and 1-Shelf	36	x	34.5	x	23.126
156	BBC243624R	Base Blind Corner Cabinet 1-Door/1-fixed Door and 1-Shelf	24	x	34.5	x	23.125
157	BBC303624R	Base Blind Corner Cabinet 1-Door/1-fixed Door and 1-Shelf	30	x	34.5	x	23.126
158	BBC323624R	Base Blind Corner Cabinet 1-Door/1-fixed Door and 1-Shelf	32	x	34.5	x	23.126
159	BBC363624R	Base Blind Corner Cabinet 1-Door/1-fixed Door and 1-Shelf	36	x	34.5	x	23.126



Base Drawer/ Single Door - ADA							
Ref.	Cabinet Name	Description	Width	x	Height	x	Depth
160	DS8123421L	Drawer Storage Base 1-Drawer, 1-Door, and 1-Shelf	12	x	32.5	x	20.125
161	DS8153421L	Drawer Storage Base 1-Drawer, 1-Door, and 1-Shelf	15	x	32.5	x	20.125
162	DS8183421L	Drawer Storage Base 1-Drawer, 1-Door, and 1-Shelf	18	x	32.5	x	20.125
163	DS8213421L	Drawer Storage Base 1-Drawer, 1-Door, and 1-Shelf	21	x	32.5	x	20.125
164	DS8243421L	Drawer Storage Base 1-Drawer, 1-Door, and 1-Shelf	24	x	32.5	x	20.125
165	DS8123421R	Drawer Storage Base 1-Drawer, 1-Door, and 1-Shelf	12	x	32.5	x	20.125
166	DS8153421R	Drawer Storage Base 1-Drawer, 1-Door, and 1-Shelf	15	x	32.5	x	20.125
167	DS8183421R	Drawer Storage Base 1-Drawer, 1-Door, and 1-Shelf	18	x	32.5	x	20.125
168	DS8213421R	Drawer Storage Base 1-Drawer, 1-Door, and 1-Shelf	21	x	32.5	x	20.125
169	DS8243421R	Drawer Storage Base 1-Drawer, 1-Door, and 1-Shelf	24	x	32.5	x	20.125



Base Drawer/ Single Door -ADA							
Ref.	Cabinet Name	Description	Width	x	Height	x	Depth
170	DS8093424L	Drawer Storage Base 1-Drawer, 1-Door, and 1-Shelf	9	x	32.5	x	23.125
171	DS8123424L	Drawer Storage Base 1-Drawer, 1-Door, and 1-Shelf	12	x	32.5	x	23.125
172	DS8153424L	Drawer Storage Base 1-Drawer, 1-Door, and 1-Shelf	15	x	32.5	x	23.125
173	DS8183424L	Drawer Storage Base 1-Drawer, 1-Door, and 1-Shelf	18	x	32.5	x	23.125
174	DS8213424L	Drawer Storage Base 1-Drawer, 1-Door, and 1-Shelf	21	x	32.5	x	23.125
175	DS8243424L	Drawer Storage Base 1-Drawer, 1-Door, and 1-Shelf	24	x	32.5	x	23.125
176	DS8093424R	Drawer Storage Base 1-Drawer, 1-Door, and 1-Shelf	9	x	32.5	x	23.125
177	DS8123424R	Drawer Storage Base 1-Drawer, 1-Door, and 1-Shelf	12	x	32.5	x	23.125
178	DS8153424R	Drawer Storage Base 1-Drawer, 1-Door, and 1-Shelf	15	x	32.5	x	23.125
179	DS8183424R	Drawer Storage Base 1-Drawer, 1-Door, and 1-Shelf	18	x	32.5	x	23.125
180	DS8213424R	Drawer Storage Base 1-Drawer, 1-Door, and 1-Shelf	21	x	32.5	x	23.125
181	DS8243424R	Drawer Storage Base 1-Drawer, 1-Door, and 1-Shelf	24	x	32.5	x	23.125



Base Drawer/ Single Door							
Ref.	Cabinet Name	Description	Width	x	Height	x	Depth
182	DS8093624L	Drawer Storage Base 1-Drawer, 1-Door, and 1-Shelf	9	x	34.5	x	23.125
183	DS8123624L	Drawer Storage Base 1-Drawer, 1-Door, and 1-Shelf	12	x	34.5	x	23.125
184	DS8153624L	Drawer Storage Base 1-Drawer, 1-Door, and 1-Shelf	15	x	34.5	x	23.125
185	DS8183624L	Drawer Storage Base 1-Drawer, 1-Door, and 1-Shelf	18	x	34.5	x	23.125
186	DS8213624L	Drawer Storage Base 1-Drawer, 1-Door, and 1-Shelf	21	x	34.5	x	23.125
187	DS8243624L	Drawer Storage Base 1-Drawer, 1-Door, and 1-Shelf	24	x	34.5	x	23.125
188	DS8093624R	Drawer Storage Base 1-Drawer, 1-Door, and 1-Shelf	9	x	34.5	x	23.125
189	DS8123624R	Drawer Storage Base 1-Drawer, 1-Door, and 1-Shelf	12	x	34.5	x	23.125
190	DS8153624R	Drawer Storage Base 1-Drawer, 1-Door, and 1-Shelf	15	x	34.5	x	23.125
191	DS8183624R	Drawer Storage Base 1-Drawer, 1-Door, and 1-Shelf	18	x	34.5	x	23.125
192	DS8213624R	Drawer Storage Base 1-Drawer, 1-Door, and 1-Shelf	21	x	34.5	x	23.125
193	DS8243624R	Drawer Storage Base 1-Drawer, 1-Door, and 1-Shelf	24	x	34.5	x	23.125



Base Drawer/ Double Door - ADA							
Ref.	Cabinet Name	Description	Width	x	Height	x	Depth
194	DS8273421	Drawer Storage Base 1-Drawer, 2-Doors, and 1-Shelf	27	x	32.5	x	20.125
195	DS8303421	Drawer Storage Base 1-Drawer, 2-Doors, and 1-Shelf	30	x	32.5	x	20.125
196	DS8333421	Drawer Storage Base 1-Drawer, 2-Doors, and 1-Shelf	33	x	32.5	x	20.125
197	DS8243424	Drawer Storage Base 1-Drawer, 2-Doors, and 1-Shelf	24	x	32.5	x	23.125
198	DS8273424	Drawer Storage Base 1-Drawer, 2-Doors, and 1-Shelf	27	x	32.5	x	23.125
199	DS8303424	Drawer Storage Base 1-Drawer, 2-Doors, and 1-Shelf	30	x	32.5	x	23.125
200	DS8333424	Drawer Storage Base 1-Drawer, 2-Doors, and 1-Shelf	33	x	32.5	x	23.125
201	DS8363424	Drawer Storage Base 1-Drawer, 2-Doors, and 1-Shelf	36	x	32.5	x	23.125



Base Drawer/ Double Door							
Ref.	Cabinet Name	Description	Width	x	Height	x	Depth
202	DS8243624	Drawer Storage Base 1-Drawer, 2-Doors, and 1-Shelf	24	x	34.5	x	23.125
203	DS8273624	Drawer Storage Base 1-Drawer, 2-Doors, and 1-Shelf	30	x	34.5	x	23.125
204	DS8333624	Drawer Storage Base 1-Drawer, 2-Doors, and 1-Shelf	33	x	34.5	x	23.125
205	DS8363624	Drawer Storage Base 1-Drawer, 2-Doors, and 1-Shelf	36	x	34.5	x	23.125



Base Wall Hung Drawer							
Ref.	Cabinet Name	Description	Width	x	Height	x	Depth
206	W2D8092021	Wall Drawer Base Cabinet 2-Drawers (10/10)	9	x	20	x	20.125
207	W2D8122021	Wall Drawer Base Cabinet 2-Drawers (10/10)	12	x	20	x	20.125
208	W2D8152021	Wall Drawer Base Cabinet 2-Drawers (10/10)	15	x	20	x	20.125



Base Drawer -ADA							
Ref.	Cabinet Name	Description	Width	x	Height	x	Depth
209	3D093421	Drawer Base Cabinet 3-Drawers (9/9/9)	9	x	32.5	x	20.125
210	3D123421	Drawer Base Cabinet 3-Drawers (9/9/9)	12	x	32.5	x	20.125
211	3D153421	Drawer Base Cabinet 3-Drawers (9/9/9)	15	x	32.5	x	20.125
212	3D183421	Drawer Base Cabinet 3-Drawers (9/9/9)	18	x	32.5	x	20.125
213	3D213421	Drawer Base Cabinet 3-Drawers (9/9/9)	21	x	32.5	x	20.125
214	3D243421	Drawer Base Cabinet 3-Drawers (9/9/9)	24	x	32.5	x	20.125



Base Drawer -ADA							
Ref.	Cabinet Name	Description	Width	x	Height	x	Depth
209	3D093421	Drawer Base Cabinet 3-Drawers (9/9/9)	9	x	32.5	x	20.125
210	3D123421	Drawer Base Cabinet 3-Drawers (9/9/9)	12	x	32.5	x	20.125
211	3D153421	Drawer Base Cabinet 3-Drawers (9/9/9)	15	x	32.5	x	20.125
212	3D183421	Drawer Base Cabinet 3-Drawers (9/9/9)	18	x	32.5	x	20.125
213	3D213421	Drawer Base Cabinet 3-Drawers (9/9/9)	21	x	32.5	x	20.125
214	3D243421	Drawer Base Cabinet 3-Drawers (9/9/9)	24	x	32.5	x	20.125
215	4D093421	Drawer Base Cabinet 4-Drawers (6/6/8/8)	9	x	32.5	x	20.125
216	4D123421	Drawer Base Cabinet 4-Drawers (6/6/8/8)	12	x	32.5	x	20.125
217	4D153421	Drawer Base Cabinet 4-Drawers (6/6/8/8)	15	x	32.5	x	20.125
218	4D183421	Drawer Base Cabinet 4-Drawers (6/6/8/8)	18	x	32.5	x	20.125
219	4D213421	Drawer Base Cabinet 4-Drawers (6/6/8/8)	21	x	32.5	x	20.125
220	4D243421	Drawer Base Cabinet 4-Drawers (6/6/8/8)	24	x	32.5	x	20.125
221	3D8093424	Drawer Base Cabinet 3-Drawers (9/9/9)	9	x	32.5	x	23.125
222	3D8123424	Drawer Base Cabinet 3-Drawers (9/9/9)	12	x	32.5	x	23.125
223	3D8153424	Drawer Base Cabinet 3-Drawers (9/9/9)	15	x	32.5	x	23.125
224	3D8183424	Drawer Base Cabinet 3-Drawers (9/9/9)	18	x	32.5	x	23.125
225	3D8213424	Drawer Base Cabinet 3-Drawers (9/9/9)	21	x	32.5	x	23.125
226	3D8243424	Drawer Base Cabinet 3-Drawers (9/9/9)	24	x	32.5	x	23.125
227	3D8273424	Drawer Base Cabinet 3-Drawers (9/9/9)	27	x	32.5	x	23.125
228	3D8303424	Drawer Base Cabinet 3-Drawers (9/9/9)	30	x	32.5	x	23.125
229	4D8093424	Drawer Base Cabinet 4-Drawers (6/6/8/8)	9	x	32.5	x	23.125
230	4D8123424	Drawer Base Cabinet 4-Drawers (6/6/8/8)	12	x	32.5	x	23.125
231	4D8153424	Drawer Base Cabinet 4-Drawers (6/6/8/8)	15	x	32.5	x	23.125
232	4D8183424	Drawer Base Cabinet 4-Drawers (6/6/8/8)	18	x	32.5	x	23.125
233	4D8213424	Drawer Base Cabinet 4-Drawers (6/6/8/8)	21	x	32.5	x	23.125
234	4D8243424	Drawer Base Cabinet 4-Drawers (6/6/8/8)	24	x	32.5	x	23.125
235	4D8273424	Drawer Base Cabinet 4-Drawers (6/6/8/8)	27	x	32.5	x	23.125
236	4D8303424	Drawer Base Cabinet 4-Drawers (6/6/8/8)	30	x	32.5	x	23.125



Base Drawer							
Ref.	Cabinet Name	Description	Width	x	Height	x	Depth
237	3D8093624	Drawer Base Cabinet 3-Drawers (10/10/10)	9	x	34.5	x	23.125
238	3D8123624	Drawer Base Cabinet 3-Drawers (10/10/10)	12	x	34.5	x	23.125
239	3D8153624	Drawer Base Cabinet 3-Drawers (10/10/10)	15	x	34.5	x	23.125
240	3D8183624	Drawer Base Cabinet 3-Drawers (10/10/10)	18	x	34.5	x	23.125
241	3D8213624	Drawer Base Cabinet 3-Drawers (10/10/10)	21	x	34.5	x	23.125
242	3D8243624	Drawer Base Cabinet 3-Drawers (10/10/10)	24	x	34.5	x	23.125
243	3D8273624	Drawer Base Cabinet 3-Drawers (10/10/10)	27	x	34.5	x	23.125
244	3D8303624	Drawer Base Cabinet 3-Drawers (10/10/10)	30	x	34.5	x	23.125
245	4D8093624	Drawer Base Cabinet 4-Drawers (6/8/8/8)	9	x	34.5	x	23.125
246	4D8123624	Drawer Base Cabinet 4-Drawers (6/8/8/8)	12	x	34.5	x	23.125
247	4D8153624	Drawer Base Cabinet 4-Drawers (6/8/8/8)	15	x	34.5	x	23.125
248	4D8183624	Drawer Base Cabinet 4-Drawers (6/8/8/8)	18	x	34.5	x	23.125
249	4D8213624	Drawer Base Cabinet 4-Drawers (6/8/8/8)	21	x	34.5	x	23.125
250	4D8243624	Drawer Base Cabinet 4-Drawers (6/8/8/8)	24	x	34.5	x	23.125
251	4D8273624	Drawer Base Cabinet 4-Drawers (6/8/8/8)	27	x	34.5	x	23.125
252	4D8303624	Drawer Base Cabinet 4-Drawers (6/8/8/8)	30	x	34.5	x	23.125



Base Sink - ADA							
	Cabinet Name	Description	Width	x	Height	x	Depth
253	F58273421	False Sink Base Cabinet 2-Doors	27	x	32.5	x	20.125
254	F58303421	False Sink Base Cabinet 2-Doors	30	x	32.5	x	20.125
255	F58333421	False Sink Base Cabinet 2-Doors	33	x	32.5	x	20.125
256	F58363421	False Sink Base Cabinet 2-Doors	36	x	32.5	x	20.125
257	F58303424	False Sink Base Cabinet 2-Doors	30	x	32.5	x	23.125
258	F58333424	False Sink Base Cabinet 2-Doors	33	x	32.5	x	23.125
259	F58363424	False Sink Base Cabinet 2-Doors	36	x	32.5	x	23.125
260	F58393424	False Sink Base Cabinet 2-Doors	39	x	32.5	x	23.125



Base Sink - ADA							
	Cabinet Name	Description	Width	x	Height	x	Depth
266	FFSB273421	False Front Sink Base Cabinet 2-Doors	27	x	32.5	x	20.125
267	FFSB303421	False Front Sink Base Cabinet 2-Doors	30	x	32.5	x	20.125
268	FFSB333421	False Front Sink Base Cabinet 2-Doors	33	x	32.5	x	20.125
269	FFSB363421	False Front Sink Base Cabinet 2-Doors	36	x	32.5	x	20.125
270	FFSB303424	False Front Sink Base Cabinet 2-Doors	30	x	32.5	x	23.125
271	FFSB333424	False Front Sink Base Cabinet 2-Doors	33	x	32.5	x	23.125
272	FFSB363424	False Front Sink Base Cabinet 2-Doors	36	x	32.5	x	23.125
273	FFSB393424	False Front Sink Base Cabinet 2-Doors	39	x	32.5	x	23.125



Base Sink							
	Cabinet Name	Description	Width	x	Height	x	Depth
274	FFSB243624	False Front Sink Base Cabinet 2-Doors	24	x	34.5	x	23.125
275	FFSB273624	False Front Sink Base Cabinet 2-Doors	27	x	34.5	x	23.125
276	FFSB303624	False Front Sink Base Cabinet 2-Doors	30	x	34.5	x	23.125
277	FFSB333624	False Front Sink Base Cabinet 2-Doors	33	x	34.5	x	23.125
278	FFSB363624	False Front Sink Base Cabinet 2-Doors	36	x	34.5	x	23.125



Tall Cabinets							
Ref.	Cabinet Name	Description	Width	x	Height	x	Depth
279	CAB128415	Open Tall Cabinet 1-Fixed/ 4-Adjustable Shelves	12	x	84	x	14.125
280	CAB158415	Open Tall Cabinet 1-Fixed/ 4-Adjustable Shelves	15	x	84	x	14.125
281	CAB188415	Open Tall Cabinet 1-Fixed/ 4-Adjustable Shelves	18	x	84	x	14.125
282	CAB218415	Open Tall Cabinet 1-Fixed/ 4-Adjustable Shelves	21	x	84	x	14.125
283	CAB248415	Open Tall Cabinet 1-Fixed/ 4-Adjustable Shelves	24	x	84	x	14.125
284	CAB278415	Open Tall Cabinet 1-Fixed/ 4-Adjustable Shelves	27	x	84	x	14.125
285	CAB308415	Open Tall Cabinet 1-Fixed/ 4-Adjustable Shelves	30	x	84	x	14.125
286	CAB338415	Open Tall Cabinet 1-Fixed/ 4-Adjustable Shelves	33	x	84	x	14.125
287	CAB368415	Open Tall Cabinet 1-Fixed/ 4-Adjustable Shelves	36	x	84	x	14.125
288	CAB128418	Open Tall Cabinet 1-Fixed/ 4-Adjustable Shelves	12	x	84	x	17.125
289	CAB158418	Open Tall Cabinet 1-Fixed/ 4-Adjustable Shelves	15	x	84	x	17.125
290	CAB188418	Open Tall Cabinet 1-Fixed/ 4-Adjustable Shelves	18	x	84	x	17.125
291	CAB218418	Open Tall Cabinet 1-Fixed/ 4-Adjustable Shelves	21	x	84	x	17.125
292	CAB248418	Open Tall Cabinet 1-Fixed/ 4-Adjustable Shelves	24	x	84	x	17.125
293	CAB278418	Open Tall Cabinet 1-Fixed/ 4-Adjustable Shelves	27	x	84	x	17.125
294	CAB308418	Open Tall Cabinet 1-Fixed/ 4-Adjustable Shelves	30	x	84	x	17.125
295	CAB338418	Open Tall Cabinet 1-Fixed/ 4-Adjustable Shelves	33	x	84	x	17.125
296	CAB368418	Open Tall Cabinet 1-Fixed/ 4-Adjustable Shelves	36	x	84	x	17.125



Tall Cabinets							
Ref.	Cabinet Name	Description	Width	x	Height	x	Depth
297	CAB1294.512	Open Tall Cabinet 1-Fixed/ 4-Adjustable Shelves	12	x	94.5	x	11.125
298	CAB1594.512	Open Tall Cabinet 1-Fixed/ 4-Adjustable Shelves	15	x	94.5	x	11.125
299	CAB1894.512	Open Tall Cabinet 1-Fixed/ 4-Adjustable Shelves	18	x	94.5	x	11.125
300	CAB2194.512	Open Tall Cabinet 1-Fixed/ 4-Adjustable Shelves	21	x	94.5	x	11.125
301	CAB2494.512	Open Tall Cabinet 1-Fixed/ 4-Adjustable Shelves	24	x	94.5	x	11.125
302	CAB2794.512	Open Tall Cabinet 1-Fixed/ 4-Adjustable Shelves	27	x	94.5	x	11.125
303	CAB3094.512	Open Tall Cabinet 1-Fixed/ 4-Adjustable Shelves	30	x	94.5	x	11.125
304	CAB3394.512	Open Tall Cabinet 1-Fixed/ 4-Adjustable Shelves	33	x	94.5	x	11.125
305	CAB3694.512	Open Tall Cabinet 1-Fixed/ 4-Adjustable Shelves	36	x	94.5	x	11.125
306	CAB1294.515	Open Tall Cabinet 1-Fixed/ 4-Adjustable Shelves	12	x	94.5	x	14.125
307	CAB1594.515	Open Tall Cabinet 1-Fixed/ 4-Adjustable Shelves	15	x	94.5	x	14.125
308	CAB1894.515	Open Tall Cabinet 1-Fixed/ 4-Adjustable Shelves	18	x	94.5	x	14.125
309	CAB2194.515	Open Tall Cabinet 1-Fixed/ 4-Adjustable Shelves	21	x	94.5	x	14.125
310	CAB2494.515	Open Tall Cabinet 1-Fixed/ 4-Adjustable Shelves	24	x	94.5	x	14.125
311	CAB2794.515	Open Tall Cabinet 1-Fixed/ 4-Adjustable Shelves	27	x	94.5	x	14.125
312	CAB3094.515	Open Tall Cabinet 1-Fixed/ 4-Adjustable Shelves	30	x	94.5	x	14.125
313	CAB3394.515	Open Tall Cabinet 1-Fixed/ 4-Adjustable Shelves	33	x	94.5	x	14.125
314	CAB3694.515	Open Tall Cabinet 1-Fixed/ 4-Adjustable Shelves	36	x	94.5	x	14.125
315	CAB1294.518	Open Tall Cabinet 1-Fixed/ 4-Adjustable Shelves	12	x	94.5	x	17.125
316	CAB1594.518	Open Tall Cabinet 1-Fixed/ 4-Adjustable Shelves	15	x	94.5	x	17.125
317	CAB1894.518	Open Tall Cabinet 1-Fixed/ 4-Adjustable Shelves	18	x	94.5	x	17.125
318	CAB2194.518	Open Tall Cabinet 1-Fixed/ 4-Adjustable Shelves	21	x	94.5	x	17.125
319	CAB2494.518	Open Tall Cabinet 1-Fixed/ 4-Adjustable Shelves	24	x	94.5	x	17.125
320	CAB2794.518	Open Tall Cabinet 1-Fixed/ 4-Adjustable Shelves	27	x	94.5	x	17.125
321	CAB3094.518	Open Tall Cabinet 1-Fixed/ 4-Adjustable Shelves	30	x	94.5	x	17.125
322	CAB3394.518	Open Tall Cabinet 1-Fixed/ 4-Adjustable Shelves	33	x	94.5	x	17.125
323	CAB3694.518	Open Tall Cabinet 1-Fixed/ 4-Adjustable Shelves	36	x	94.5	x	17.125
324	CAB1294.521	Open Tall Cabinet 1-Fixed/ 4-Adjustable Shelves	12	x	94.5	x	20.125



Base Tall Single Door							
Ref.	Cabinet Name	Description	Width	x	Height	x	Depth
325	SC128221L	Base Tall Cabinet 1-Door and 1-Fixed/ 3-Adjustable Shelves	12	x	86	x	20.125
326	SC158221L	Base Tall Cabinet 1-Door and 1-Fixed/ 3-Adjustable Shelves	15	x	86	x	20.125
327	SC188221L	Base Tall Cabinet 1-Door and 1-Fixed/ 3-Adjustable Shelves	18	x	86	x	20.125
328	SC128221R	Base Tall Cabinet 1-Door and 1-Fixed/ 3-Adjustable Shelves	12	x	86	x	20.125
329	SC158221R	Base Tall Cabinet 1-Door and 1-Fixed/ 3-Adjustable Shelves	15	x	86	x	20.125
330	SC188221R	Base Tall Cabinet 1-Door and 1-Fixed/ 3-Adjustable Shelves	18	x	86	x	20.125
331	PC1294.512L	Base Tall Cabinet 1-Door and 1-Fixed/ 4-Adjustable Shelves	12	x	94.5	x	11.125
332	PC1594.512L	Base Tall Cabinet 1-Door and 1-Fixed/ 4-Adjustable Shelves	15	x	94.5	x	11.125
333	PC1894.512L	Base Tall Cabinet 1-Door and 1-Fixed/ 4-Adjustable Shelves	18	x	94.5	x	11.125
334	PC2194.512L	Base Tall Cabinet 1-Door and 1-Fixed/ 4-Adjustable Shelves	21	x	94.5	x	11.125



Base Cabinet Tall							
Ref.	Cabinet Name	Description	Width	x	Height	x	Depth
335	PC2494.512L	Base Tall Cabinet 1-Door and 1-Fixed/ 4-Adjustable Shelves	24	x	94.5	x	11.125
336	PC1294.512R	Base Tall Cabinet 1-Door and 1-Fixed/ 4-Adjustable Shelves	12	x	94.5	x	11.125
337	PC1594.512R	Base Tall Cabinet 1-Door and 1-Fixed/ 4-Adjustable Shelves	15	x	94.5	x	11.125
338	PC1894.512R	Base Tall Cabinet 1-Door and 1-Fixed/ 4-Adjustable Shelves	18	x	94.5	x	11.125
339	PC2194.512R	Base Tall Cabinet 1-Door and 1-Fixed/ 4-Adjustable Shelves	21	x	94.5	x	11.125
340	PC2494.512R	Base Tall Cabinet 1-Door and 1-Fixed/ 4-Adjustable Shelves	24	x	94.5	x	11.125
341	PC1294.518L	Base Tall Cabinet 1-Door and 1-Fixed/ 4-Adjustable Shelves	12	x	94.5	x	17.125
342	PC1594.518L	Base Tall Cabinet 1-Door and 1-Fixed/ 4-Adjustable Shelves	15	x	94.5	x	17.125
343	PC1894.518L	Base Tall Cabinet 1-Door and 1-Fixed/ 4-Adjustable Shelves	18	x	94.5	x	17.125
344	PC2194.518L	Base Tall Cabinet 1-Door and 1-Fixed/ 4-Adjustable Shelves	21	x	94.5	x	17.125
345	PC2494.518L	Base Tall Cabinet 1-Door and 1-Fixed/ 4-Adjustable Shelves	24	x	94.5	x	17.125
346	PC1294.518R	Base Tall Cabinet 1-Door and 1-Fixed/ 4-Adjustable Shelves	12	x	94.5	x	17.125
347	PC1594.518R	Base Tall Cabinet 1-Door and 1-Fixed/ 4-Adjustable Shelves	15	x	94.5	x	17.125
348	PC1894.518R	Base Tall Cabinet 1-Door and 1-Fixed/ 4-Adjustable Shelves	18	x	94.5	x	17.125
349	PC2194.518R	Base Tall Cabinet 1-Door and 1-Fixed/ 4-Adjustable Shelves	21	x	94.5	x	17.125
350	PC2494.518R	Base Tall Cabinet 1-Door and 1-Fixed/ 4-Adjustable Shelves	24	x	94.5	x	17.125



Base Cabinet Tall							
Ref.	Cabinet Name	Description	Width	x	Height	x	Depth
351	PC1294.521L	Base Tall Cabinet 1-Door and 1-Fixed/ 4-Adjustable Shelves	12	x	94.5	x	20.125
352	PC1594.521L	Base Tall Cabinet 1-Door and 1-Fixed/ 4-Adjustable Shelves	15	x	94.5	x	20.125
353	PC1894.521L	Base Tall Cabinet 1-Door and 1-Fixed/ 4-Adjustable Shelves	18	x	94.5	x	20.125
354	PC2194.521L	Base Tall Cabinet 1-Door and 1-Fixed/ 4-Adjustable Shelves	21	x	94.5	x	20.125
355	PC2494.521L	Base Tall Cabinet 1-Door and 1-Fixed/ 4-Adjustable Shelves	24	x	94.5	x	20.125
356	PC1294.521R	Base Tall Cabinet 1-Door and 1-Fixed/ 4-Adjustable Shelves	12	x	94.5	x	20.125
357	PC1594.521R	Base Tall Cabinet 1-Door and 1-Fixed/ 4-Adjustable Shelves	15	x	94.5	x	20.125
358	PC1894.521R	Base Tall Cabinet 1-Door and 1-Fixed/ 4-Adjustable Shelves	18	x	94.5	x	20.125
359	PC2194.521R	Base Tall Cabinet 1-Door and 1-Fixed/ 4-Adjustable Shelves	21	x	94.5	x	20.125
360	PC2494.521R	Base Tall Cabinet 1-Door and 1-Fixed/ 4-Adjustable Shelves	24	x	94.5	x	20.125
361	PC1294.524L	Base Tall Cabinet 1-Door and 1-Fixed/ 4-Adjustable Shelves	12	x	94.5	x	23.125
362	PC1594.524L	Base Tall Cabinet 1-Door and 1-Fixed/ 4-Adjustable Shelves	15	x	94.5	x	23.125
363	PC1894.524L	Base Tall Cabinet 1-Door and 1-Fixed/ 4-Adjustable Shelves	18	x	94.5	x	23.125
364	PC2194.524L	Base Tall Cabinet 1-Door and 1-Fixed/ 4-Adjustable Shelves	21	x	94.5	x	23.125
365	PC2494.524L	Base Tall Cabinet 1-Door and 1-Fixed/ 4-Adjustable Shelves	24	x	94.5	x	23.125
366	PC1294.524R	Base Tall Cabinet 1-Door and 1-Fixed/ 4-Adjustable Shelves	12	x	94.5	x	23.125
367	PC1594.524R	Base Tall Cabinet 1-Door and 1-Fixed/ 4-Adjustable Shelves	15	x	94.5	x	23.125
368	PC1894.524R	Base Tall Cabinet 1-Door and 1-Fixed/ 4-Adjustable Shelves	18	x	94.5	x	23.125
369	PC2194.524R	Base Tall Cabinet 1-Door and 1-Fixed/ 4-Adjustable Shelves	21	x	94.5	x	23.125
370	PC2494.524R	Base Tall Cabinet 1-Door and 1-Fixed/ 4-Adjustable Shelves	24	x	94.5	x	23.125



Base Tall Drawer/ Door							
Ref.	Cabinet Name	Description	Width	x	Height	x	Depth
431	3DSC128221L	Base Tall Cabinet 3-Drawer, 1-Door, and 1-Fixed/ 2-Adjustable Shelves	12	x	86	x	20.125
432	3DSC158221L	Base Tall Cabinet 3-Drawer, 1-Door, and 1-Fixed/ 2-Adjustable Shelves	15	x	86	x	20.125
433	3DSC188221L	Base Tall Cabinet 3-Drawer, 1-Door, and 1-Fixed/ 2-Adjustable Shelves	18	x	86	x	20.125
434	3DSC128221R	Base Tall Cabinet 3-Drawer, 1-Door, and 1-Fixed/ 2-Adjustable Shelves	12	x	86	x	20.125
435	3DSC158221R	Base Tall Cabinet 3-Drawer, 1-Door, and 1-Fixed/ 2-Adjustable Shelves	15	x	86	x	20.125
436	3DSC188221R	Base Tall Cabinet 3-Drawer, 1-Door, and 1-Fixed/ 2-Adjustable Shelves	18	x	86	x	20.125



Ancillary Parts							
Ref.	Cabinet Name	Description	Width	x	Height	x	Depth
437	TOE KICK	Toe Kick Panel	96	x	3.875	x	0.75
438	CFILLER9603	Filler (Cut to Fit)	3	x	96	x	0.75
439	FILLER013424	Base Filler	1	x	32.5	x	0.75
440	FILLER023424	Base Filler	2	x	32.5	x	0.75
441	FILLER033424	Base Filler	3	x	32.5	x	0.75
442	FILLER043424	Base Filler	4	x	32.5	x	0.75
443	FILLER013624	Base Filler	1	x	34.5	x	0.75
444	FILLER023624	Base Filler	2	x	34.5	x	0.75
445	FILLER033624	Base Filler	3	x	34.5	x	0.75
446	FILLER043624	Base Filler	4	x	34.5	x	0.75
447	CRNFILLER033424	Base Corner Filler	3	x	32.5	x	3
448	CRNFILLER033624	Base Corner Filler	3	x	34.5	x	3
449	WFILLER011812	Wall Filler	1	x	18	x	0.75
450	WFILLER021812	Wall Filler	2	x	18	x	0.75
451	WFILLER031812	Wall Filler	3	x	18	x	0.75
452	WFILLER041812	Wall Filler	4	x	18	x	0.75
453	WFILLER012412	Wall Filler	1	x	24	x	0.75
454	WFILLER022412	Wall Filler	2	x	24	x	0.75
455	WFILLER032412	Wall Filler	3	x	24	x	0.75
456	WFILLER042412	Wall Filler	4	x	24	x	0.75
457	WFILLER013012	Wall Filler	1	x	30	x	0.75
458	WFILLER023012	Wall Filler	2	x	30	x	0.75
459	WFILLER033012	Wall Filler	3	x	30	x	0.75
460	WFILLER043012	Wall Filler	4	x	30	x	0.75
461	WFILLER013612	Wall Filler	1	x	36	x	0.75
462	WFILLER023612	Wall Filler	2	x	36	x	0.75
463	WFILLER033612	Wall Filler	3	x	36	x	0.75
464	WFILLER043612	Wall Filler	4	x	36	x	0.75
465	WFILLER014212	Wall Filler	1	x	42	x	0.75
466	WFILLER024212	Wall Filler	2	x	42	x	0.75
467	WFILLER034212	Wall Filler	3	x	42	x	0.75
468	WFILLER044212	Wall Filler	4	x	42	x	0.75
469	WCRNFILLER031814	Wall Corner Filler	3	x	18	x	3
470	WCRNFILLER032414	Wall Corner Filler	3	x	24	x	3
471	WCRNFILLER033014	Wall Corner Filler	3	x	30	x	3
472	WCRNFILLER033614	Wall Corner Filler	3	x	36	x	3
473	WCRNFILLER034214	Wall Corner Filler	3	x	42	x	3
474	WFCP3013	Wall Finished Cabinet Panel	0.75	x	30	x	13
475	FCP3424	Base Finished Cabinet Panel	0.75	x	32.5	x	23.125
476	FCP3624	Base Finished Cabinet Panel	0.75	x	34.5	x	24
477	FEP3422	Finished End Panel	0.75	x	32.5	x	22
478	FEP3425	Finished End Panel	0.75	x	32.5	x	25
479	FEP3436	Finished End Panel	0.75	x	32.5	x	36
480	FEP3625	Finished End Panel	0.75	x	34.5	x	25
481	FEP3628.5	Finished End Panel	0.75	x	34.5	x	28.5
482	FEP3636	Finished End Panel	0.75	x	34.5	x	36
483	FEP8425	Finished End Panel	0.75	x	84	x	25
484	FEP9625	Finished End Panel	0.75	x	96	x	25
485	FEP9631	Finished End Panel	0.75	x	96	x	31

7. CONTACT:



Note: StudioBuilt reserves all rights to revise specifications.
Copyright: 2024, StudioBuilt by Amherst

Rev. 03012024_R3

